

technical
parameters

NEO·H

Two-platen
Injection Molding Machine

Tederic Machinery Co., Ltd.
No.245 Wenze North Road,
Hangzhou City, Zhejiang Province, 310018, China
T. +86-571-86733387
www.tedericglobal.com

t.NEO·H.202207.03

tederic
SMART INJECTION

NEO-H

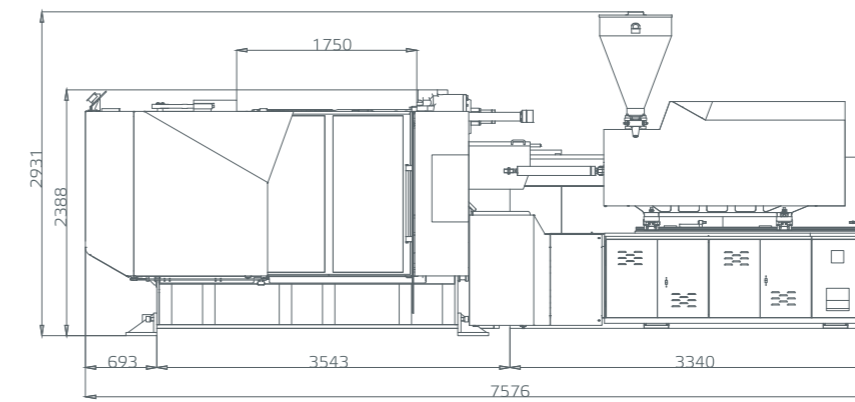
Parameters

Clamping unit		NEO-H550			
Clamping force	kN	5500			
Clamping stroke	mm	850			
Space between tie bars	mm	915×915			
Max. mold height	mm	900			
Min. mold height	mm	400			
Ejector stroke	mm	260			
Ejector force	kN	182			
No. of ejector pins	piece	11			
Max. daylight	mm	1750			
Min. mold dimension	mm	640.5×640.5			
Platen dimensions (HxV)	mm	1335×1335			
Injection unit		i3800			
	Unit	A	B	C	D
Screw diameter	mm	75	80	85	90
Screw L/D ratio	L/D	23.5	22.0	20.7	19.6
Shot size (theoretical)	cm ³	1784.8	2030.7	2292.5	2570.1
Injection weight (PS)	g	1624.2	1848.0	2086.2	2338.8
Injection pressure	MPa	205.3	180.5	159.9	142.6
Injection rate into air	g/s	496	564	637	714
Screw speed	rpm	165			
Max. injection speed	mm/s	123			
Injection stroke	mm	404			
Others		i3800			
Max. pump pressure	MPa	17.5			
Pump motor power	kW	40+40			
Heater power	kW	37 / 45.9			
Hopper capacity	kg	50			
Oil tank volume	L	590			
Total machine weight	t	21			
Machine dimension (LxWxH)	m	7.6X2.33X2.4			

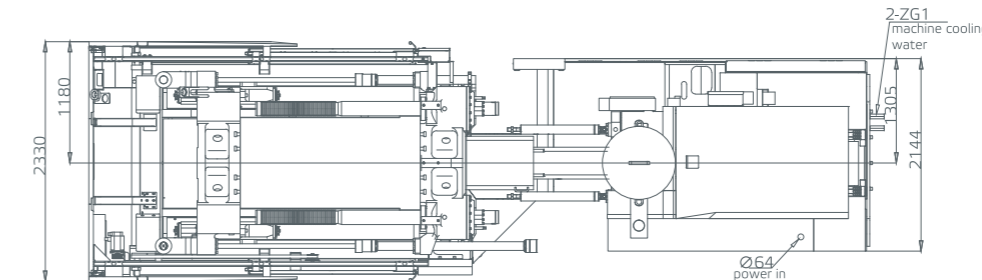
Remarks:
 The bearing weight by moving platen is 2/3 of the maximum mold weight.
 Theoretical capacity is the calculated volume of injection produced by the cross-sectional area of the screw/plunger and the injection stroke
 The injection weight (PS) is the theoretical value derived from the injection volume and the typical melt density of polystyrene
 The screw speed is the theoretical maximum screw speed.
 Please inform us if you have requirement for engineering material like PVC, PMMA or some special requirement.

Due to continuous improvements, we reserve the right to modify any aspect of the specification without prior notice.

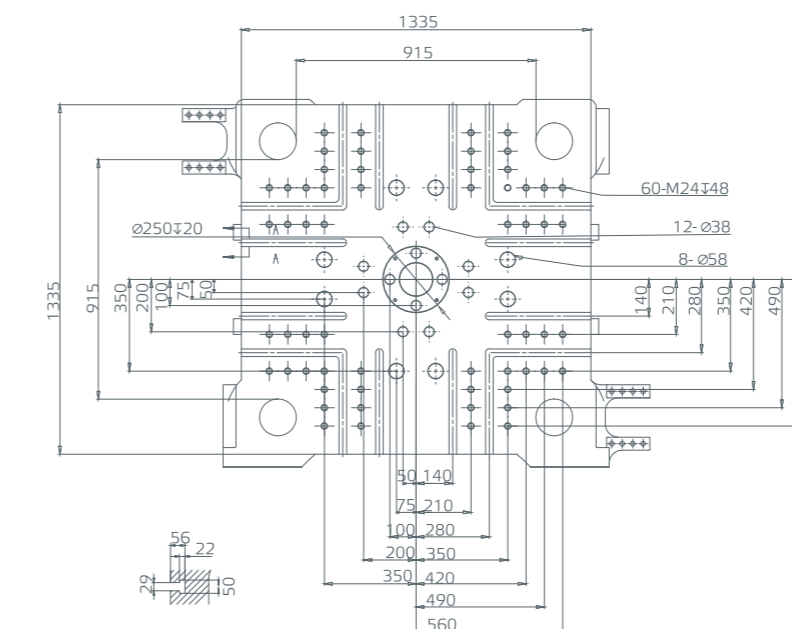
Front view of machine dimension



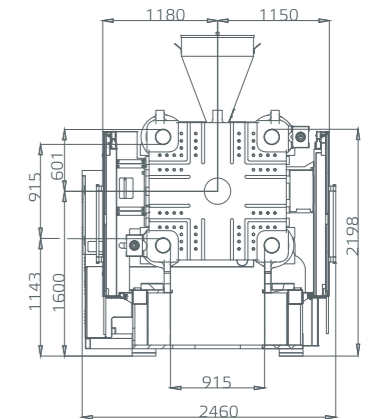
Top view of machine dimension



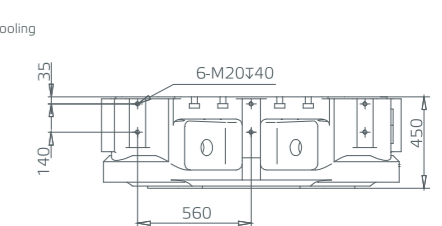
Moving platen dimension



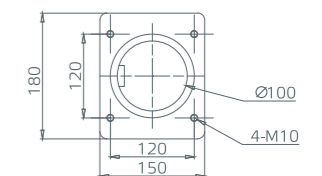
Robot installation dimension



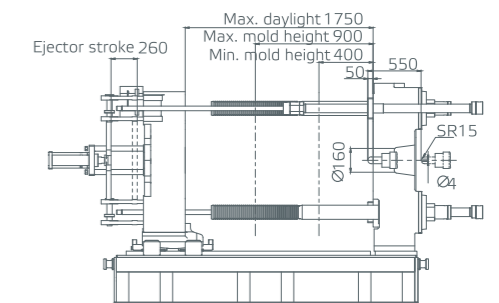
Robot fixed platen dimension



Feeding port dimensions



Clamping unit



Unit:mm

NEO-H

Parameters

Clamping unit	Unit	NEO-H680			
Clamping force	kN	6800			
Clamping stroke	mm	900			
Space between tie bars	mm	1100×960			
Max. mold height	mm	950			
Min. mold height	mm	450			
Ejector stroke	mm	300			
Ejector force	kN	182			
No. of ejector pins	piece	11			
Max. daylight	mm	1850			
Min. mold dimension	mm	770×672			
Platen dimensions (HxV)	mm	1500×1400			
Injection unit	Unit	i4800			
		A	B	C	D
Screw diameter	mm	80	85	90	100
Screw L/D ratio	L/D	23.4	22.0	20.8	18.7
Shot size (theoretical)	cm ³	2241.8	2530.8	2837.3	3502.9
Injection weight (PS)	g	2040.1	2303.1	2582.0	3187.6
Injection pressure	MPa	204.4	181.1	161.5	130.8
Injection rate into air	g/s	548	618	693	856
Screw speed	rpm	150			
Max. injection speed	mm/s	120			
Injection stroke	mm	446			
Others	Unit	i4800			
Max. pump pressure	MPa	17.5			
Pump motor power	kW	51+40			
Heater power	kW	40.8 / 50.6			
Hopper capacity	kg	100			
Oil tank volume	L	710			
Total machine weight	t	25			
Machine dimension (LxWxH)	m	7.95X2.6X2.5			

Remarks:

The bearing weight by moving platen is 2/3 of the maximum mold weight.

Theoretical capacity is the calculated volume of injection produced by the cross-sectional area of the screw/plunger and the injection stroke

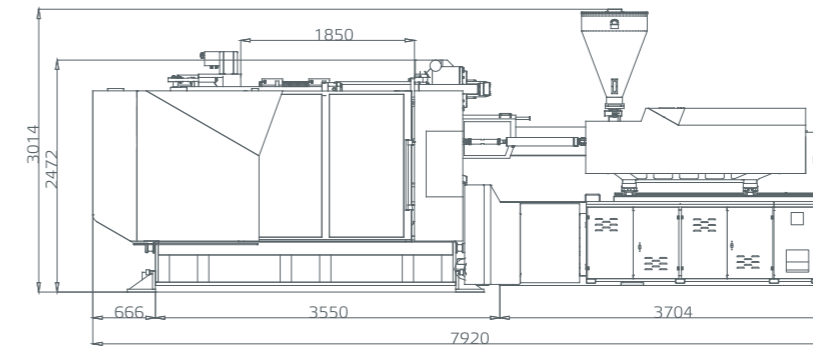
The injection weight (PS) is the theoretical value derived from the injection volume and the typical melt density of polystyrene

The screw speed is the theoretical maximum screw speed.

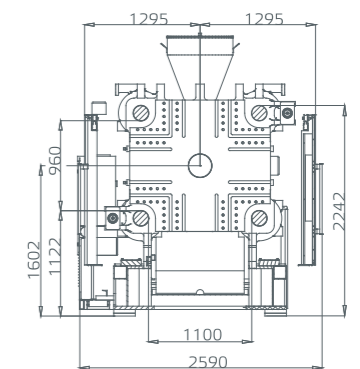
Please inform us if you have requirement for engineering material like PVC, PMMA or some special requirement.

Due to continuous improvements, we reserve the right to modify any aspect of the specification without prior notice.

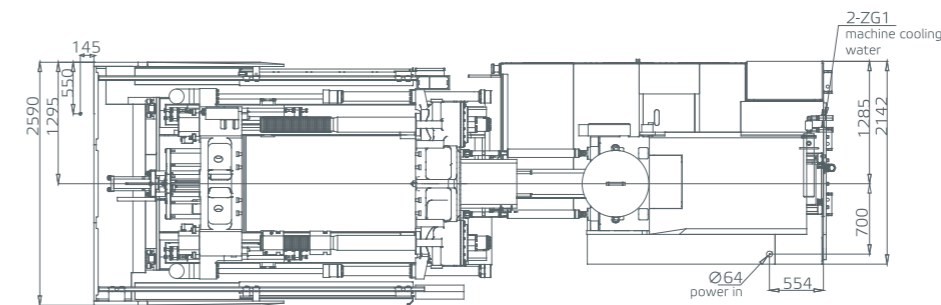
Front view of machine dimension



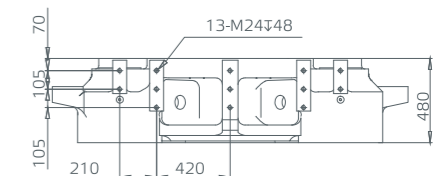
Robot installation dimension



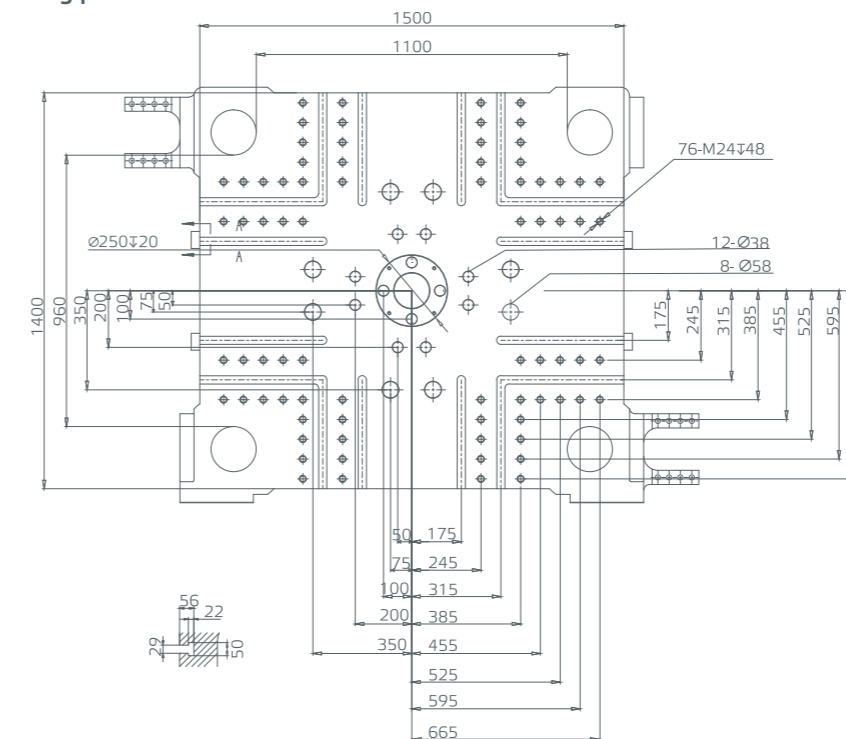
Top view of machine dimension



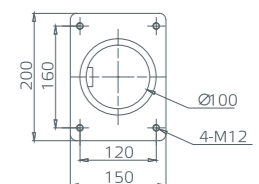
Robot fixed platen dimension



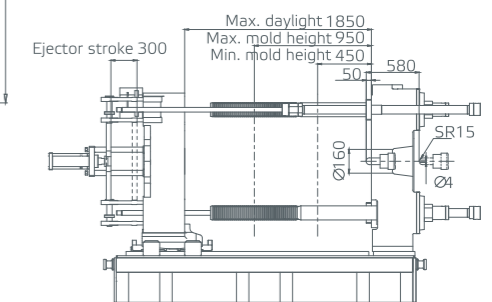
Moving platen dimension



Feeding port dimensions



Clamping unit



Unit:mm

NEO-H

Parameters

Clamping unit	Unit	NEO-H850							
Clamping force	kN	8500							
Clamping stroke	mm	1000							
Space between tie bars	mm	1080×1080							
Max. mold height	mm	1100							
Min. mold height	mm	500							
Ejector stroke	mm	350							
Ejector force	kN	260							
No. of ejector pins	piece	11							
Max. daylight	mm	2100							
Min. mold dimension	mm	756×756							
Platen dimensions (HxV)	mm	1580×1580							
Injection unit	Unit	i5800				i7500			
Screw diameter	mm	85	90	100	110	90	100	110	120
Screw L/D ratio	L/D	23.3	22.0	19.8	18.0	24.4	22.0	20.0	18.3
Shot size (theoretical)	cm ³	2684.0	3009.1	3714.9	4495.1	3276.3	4044.8	4894.2	5824.5
Injection weight (PS)	g	2442.5	2738.3	3380.6	4090.5	2981.4	3680.8	4453.7	5300.3
Injection pressure	MPa	202.9	180.9	146.6	121.1	222.4	180.2	148.9	125.1
Injection rate into air	g/s	626	702	867	1049	707	873	1057	1258
Screw speed	rpm	126				112			
Max. injection speed	mm/s	121				122			
Injection stroke	mm	473				515			
Others	Unit	i5800				i7500			
Max. pump pressure	MPa	17.5				17.5			
Pump motor power	kW	61+40				40x2+40			
Heater power	kW	44.3/54.9				58.7/72.5			
Hopper capacity	kg	100				100			
Oil tank volume	L	800				980			
Total machine weight	t	37				40			
Machine dimension (LxWxH)	m	8.81x2.8x2.6				9.5x2.82x2.6			

Remarks:

The bearing weight by moving platen is 2/3 of the maximum mold weight.

Theoretical capacity is the calculated volume of injection produced by the cross-sectional area of the screw/plunger and the injection stroke

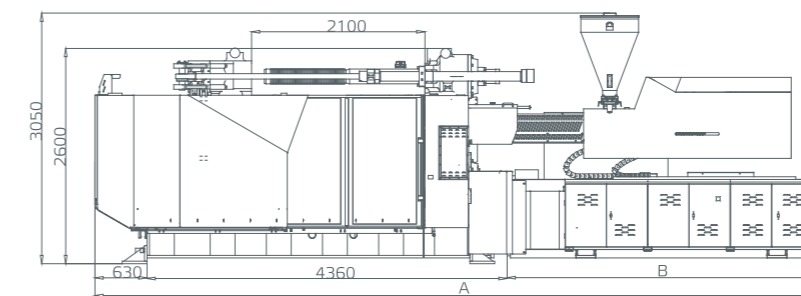
The injection weight (PS) is the theoretical value derived from the injection volume and the typical melt density of polystyrene

The screw speed is the theoretical maximum screw speed.

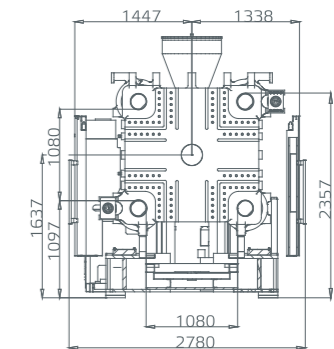
Please inform us if you have requirement for engineering material like PVC, PMMA or some special requirement.

Due to continuous improvements, we reserve the right to modify any aspect of the specification without prior notice.

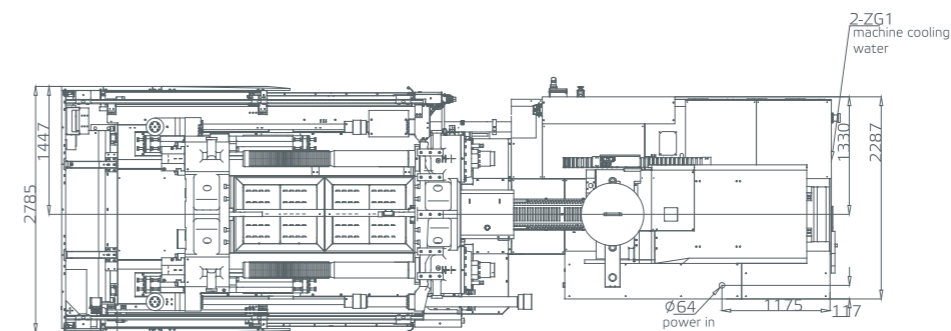
Front view of machine dimension



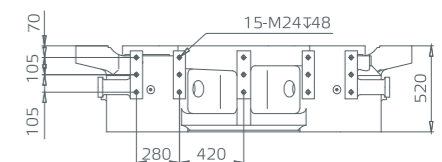
Robot installation dimension



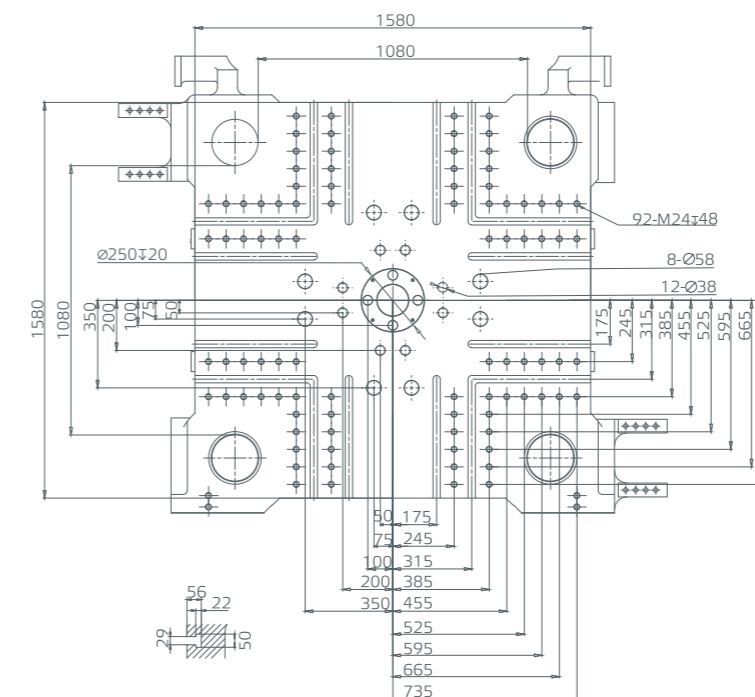
Top view of machine dimension



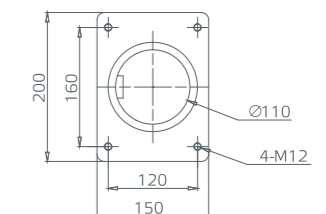
Robot fixed platen dimension



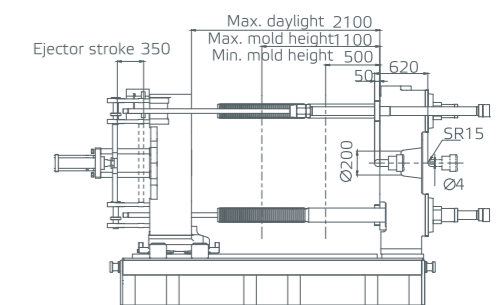
Moving platen dimension



Feeding port dimensions



Clamping unit



Injection unit	A	B
i5800	8807	3817
i7500	9452	4462

Unit: mm

NEO-H

Parameters

Clamping unit	Unit	NEO-H1200			
Clamping force	kN	12000			
Clamping stroke	mm	1350			
Space between tie bars	mm	1360×1175			
Max. mold height	mm	1250			
Min. mold height	mm	600			
Ejector stroke	mm	350			
Ejector force	kN	260			
No. of ejector pins	piece	13			
Max. daylight	mm	2600			
Min. mold dimension	mm	952×822			
Platen dimensions (HxV)	mm	1830×1730			
Injection unit	Unit	i9500			
		A	B	C	D
Screw diameter	mm	100	110	120	130
Screw L/D ratio	L/D	24.2	22.0	20.2	18.6
Shot size (theoretical)	cm ³	4319.7	5226.8	6220.3	7300.3
Injection weight (PS)	g	3930.9	4756.4	5660.5	6643.2
Injection pressure	MPa	212.8	175.9	147.8	125.9
Injection rate into air	g/s	739	895	1065	1250
Screw speed	rpm	100			
Max. injection speed	mm/s	104			
Injection stroke	mm	550			
Others	Unit	i9500			
Max. pump pressure	MPa	17.5			
Pump motor power	kW	40x2+40			
Heater power	kW	61.9/76.8			
Hopper capacity	kg	100			
Oil tank volume	L	1100			
Total machine weight	t	48			
Machine dimension (LxWxH)	m	10.5X3.4X2.81			

Remarks:

The bearing weight by moving platen is 2/3 of the maximum mold weight.

Theoretical capacity is the calculated volume of injection produced by the cross-sectional area of the screw/plunger and the injection stroke

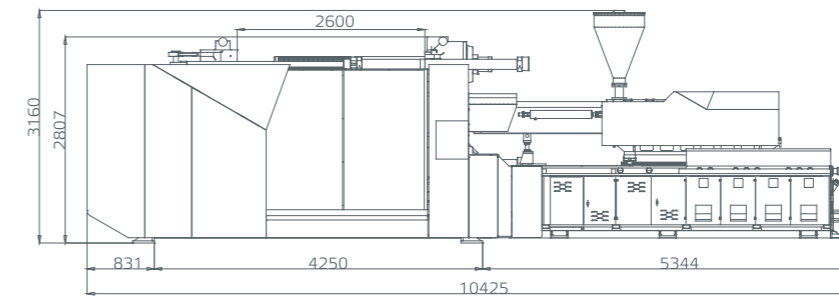
The injection weight (PS) is the theoretical value derived from the injection volume and the typical melt density of polystyrene

The screw speed is the theoretical maximum screw speed.

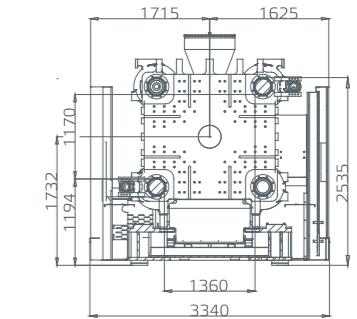
Please inform us if you have requirement for engineering material like PVC, PMMA or some special requirement.

Due to continuous improvements, we reserve the right to modify any aspect of the specification without prior notice.

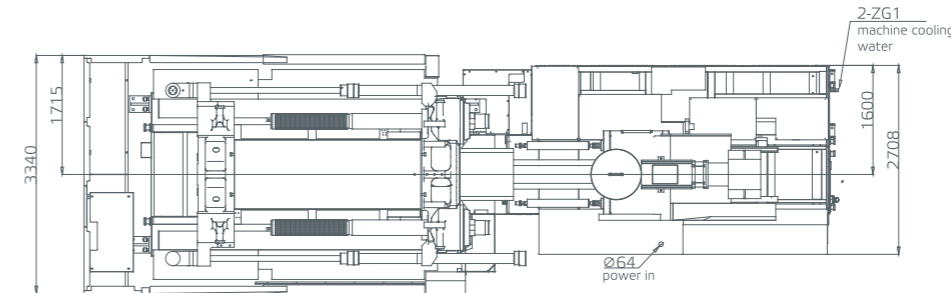
Front view of machine dimension



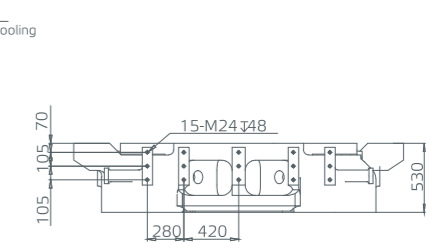
Robot installation dimension



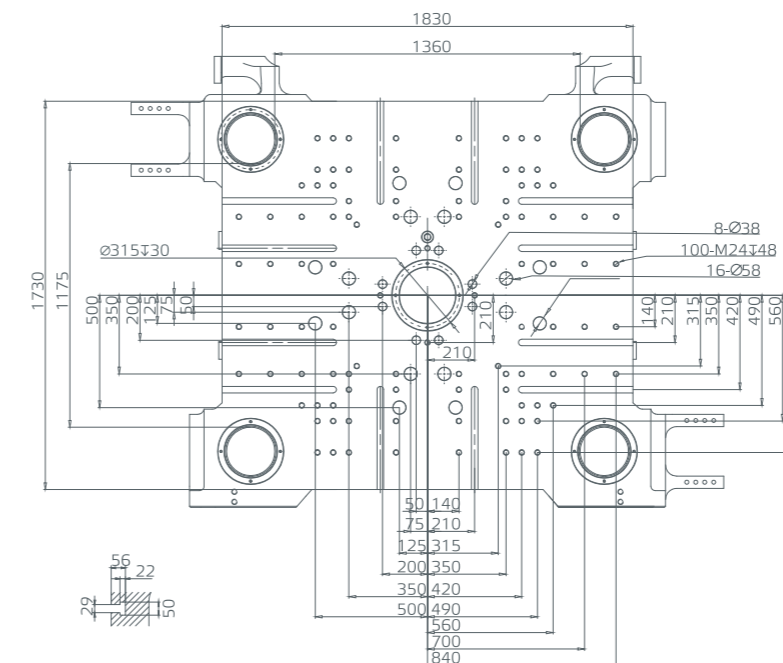
Top view of machine dimension



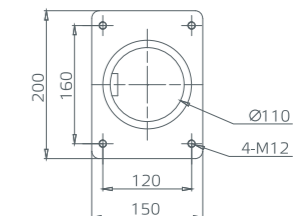
Robot fixed platen dimension



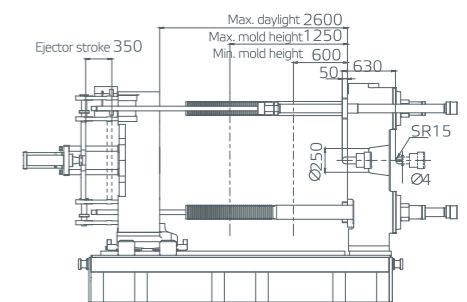
Moving platen dimension



Feeding port dimensions



Clamping unit



Unit:mm

NEO-H

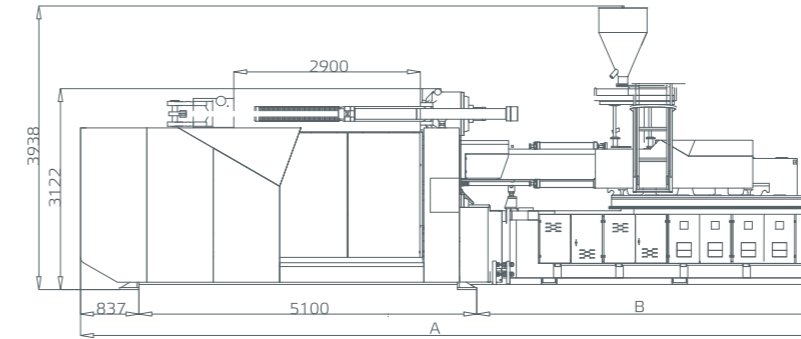
Parameters

Clamping unit	Unit	NEO-H1400							
Clamping force	kN	14000							
Clamping stroke	mm	1550							
Space between tie bars	mm	1460×1360							
Max. mold height	mm	1350							
Min. mold height	mm	600							
Ejector stroke	mm	350							
Ejector force	kN	300							
No. of ejector pins	piece	13							
Max. daylight	mm	2900							
Min. mold dimension	mm	1022×952							
Platen dimensions (HxV)	mm	1980×1900							
Injection unit	Unit	i9500				i13500			
		A	B	C	D	A	B	C	D
Screw diameter	mm	100	110	120	130	120	130	140	150
Screw L/D ratio	L/D	24.2	22.0	20.2	18.6	23.8	22.0	20.4	19.1
Shot size (theoretical)	cm ³	4320	5227	6220	7300	6775	7951	9221	10585
Injection weight (PS)	g	3931	4756	5661	6643	6165	7235	8391	9633
Injection pressure	MPa	212.8	175.9	147.8	125.9	201.0	171.0	148.0	129.0
Injection rate into air	g/s	924.22	1118.3	1330.9	1561.9	977	1147	1330	1527
Screw speed	rpm	100				112			
Max. injection speed	mm/s	129				95			
Injection stroke	mm	550				599			
Others	Unit	i9500				i13500			
Max. pump pressure	MPa	17.5				17.5			
Pump motor power	kW	51x2+61				51x2+61			
Heater power	kW	61.9/76.8				89.9			
Hopper capacity	kg	100				100			
Oil tank volume	L	1400				1400			
Total machine weight	t	60				63			
Machine dimension (LxWxH)	m	10.8x3.8x4.0				11.7x3.8x4.0			

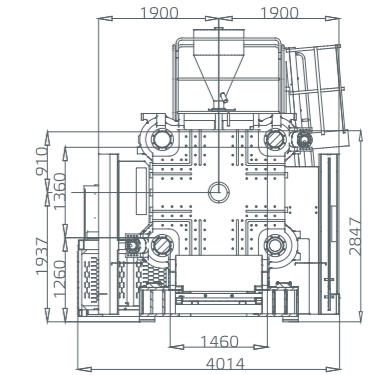
Remarks:
 The bearing weight by moving platen is 2/3 of the maximum mold weight.
 Theoretical capacity is the calculated volume of injection produced by the cross-sectional area of the screw/plunger and the injection stroke
 The injection weight (PS) is the theoretical value derived from the injection volume and the typical melt density of polystyrene
 The screw speed is the theoretical maximum screw speed.
 Please inform us if you have requirement for engineering material like PVC, PMMA or some special requirement.

Due to continuous improvements, we reserve the right to modify any aspect of the specification without prior notice.

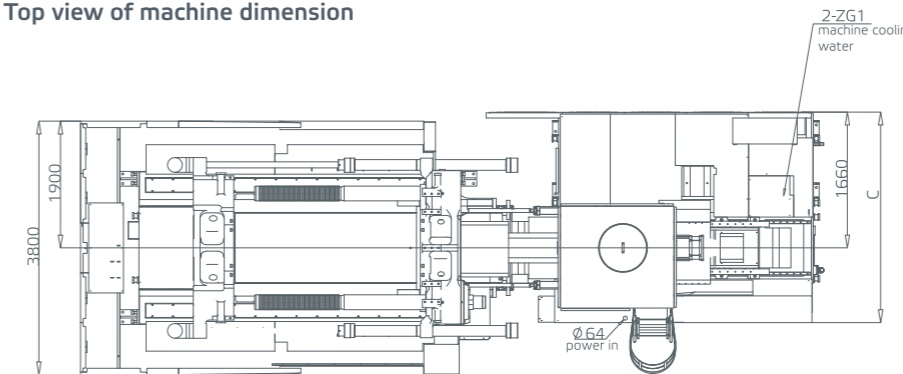
Front view of machine dimension



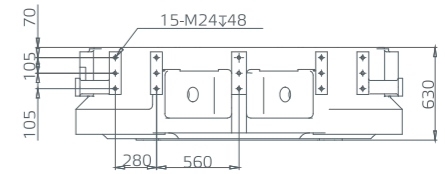
Robot installation dimension



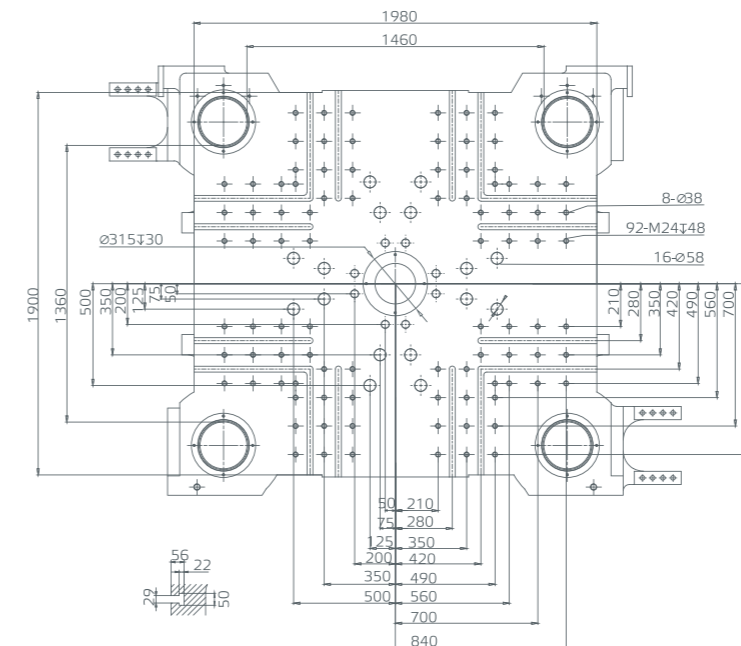
Top view of machine dimension



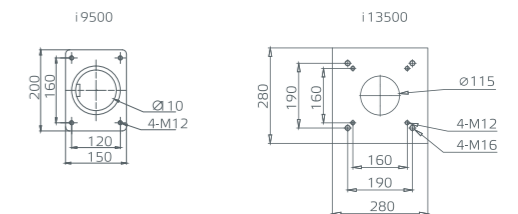
Robot fixed platen dimension



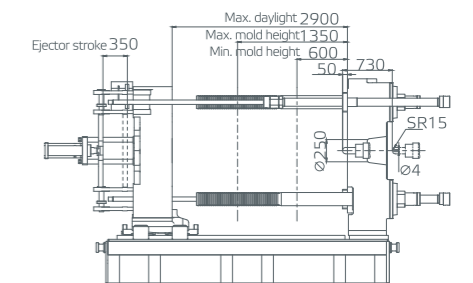
Moving platen dimension



Feeding port dimensions



Clamping unit



Injection unit	A	B	C
i9500	11025	5088	2750
i13500	11650	5713	2762

Unit:mm

NEO-H

Parameters

Clamping unit	Unit	NEO-H1700							
Clamping force	kN	17000							
Clamping stroke	mm	1650							
Space between tie bars	mm	1570×1470							
Max. mold height	mm	1600							
Min. mold height	mm	650							
Ejector stroke	mm	400							
Ejector force	kN	430							
No. of ejector pins	piece	13							
Max. daylight	mm	3250							
Min. mold dimension	mm	1099×1029							
Platen dimensions (HxV)	mm	2290×2190							
Injection unit	Unit	i9500				i17800			
		A	B	C	D	A	B	C	D
Screw diameter	mm	100	110	120	130	130	140	150	160
Screw L/D ratio	L/D	24.2	22.0	20.2	18.6	23.7	22.0	20.5	19.3
Shot size (theoretical)	cm ³	4320	5227	6220	7300	9145	10606	12176	13853
Injection weight (PS)	g	3931	4756	5661	6643	8322	9652	11080	12606
Injection pressure	MPa	212.8	175.9	147.8	125.9	213.0	184.0	160.0	141.0
Injection rate into air	g/s	1066.4	1290.4	1535.6	1802.2	1065	1235	1418	1613
Screw speed	rpm	100				98			
Max. injection speed	mm/s	149				88			
Injection stroke	mm	550				689			
Others	Unit	i9500				i17800			
Max. pump pressure	MPa	17.5				17.5			
Pump motor power	kW	61x2+61				61x2+61			
Heater power	kW	61.9/76.8				104.4			
Hopper capacity	kg	100				200			
Oil tank volume	L	1800				1800			
Total machine weight	t	74				85			
Machine dimension (LxWxH)	m	12.0x3.9x3.3				12.5x3.9x3.3			

Remarks:

The bearing weight by moving platen is 2/3 of the maximum mold weight.

Theoretical capacity is the calculated volume of injection produced by the cross-sectional area of the screw/plunger and the injection stroke

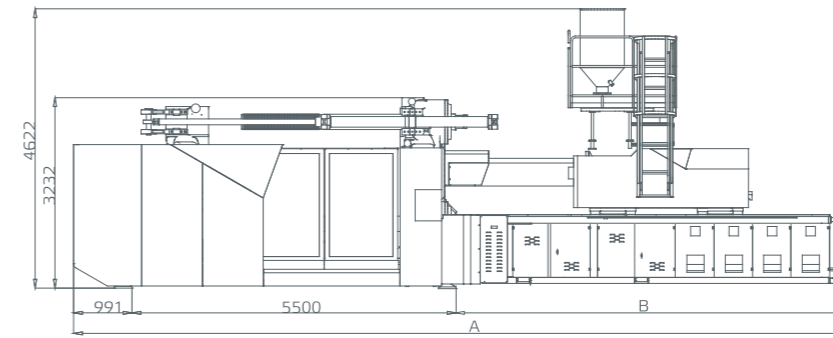
The injection weight (PS) is the theoretical value derived from the injection volume and the typical melt density of polystyrene

The screw speed is the theoretical maximum screw speed.

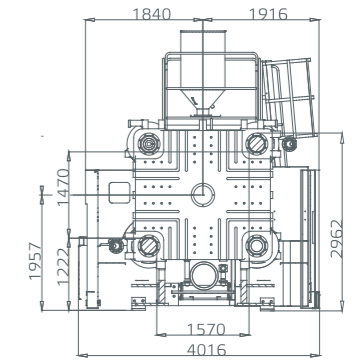
Please inform us if you have requirement for engineering material like PVC, PMMA or some special requirement.

Due to continuous improvements, we reserve the right to modify any aspect of the specification without prior notice

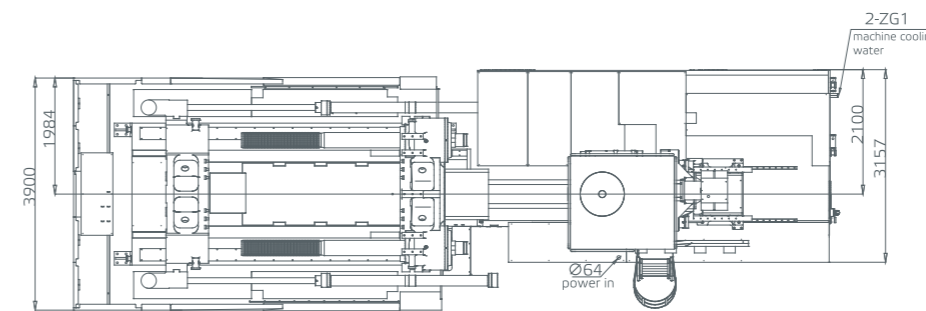
Front view of machine dimension



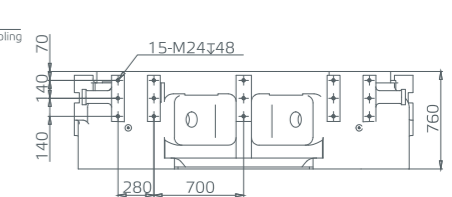
Robot installation dimension



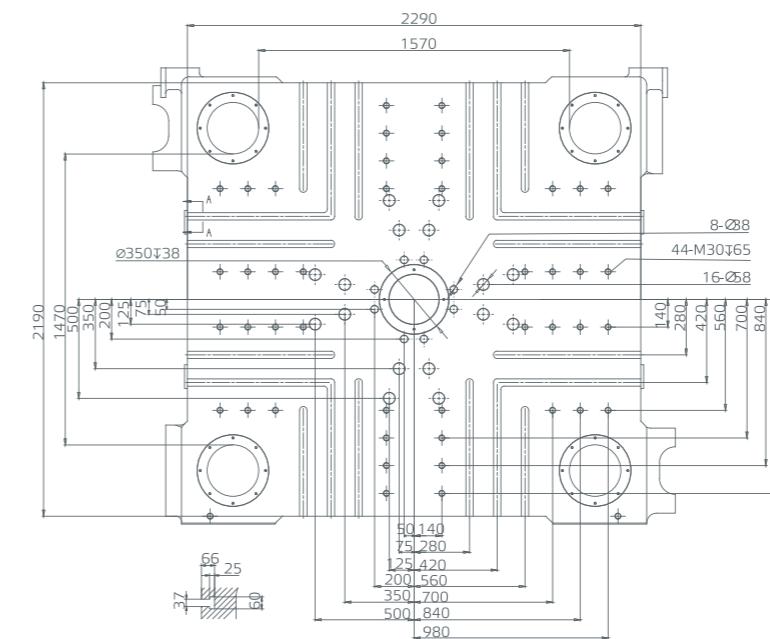
Top view of machine dimension



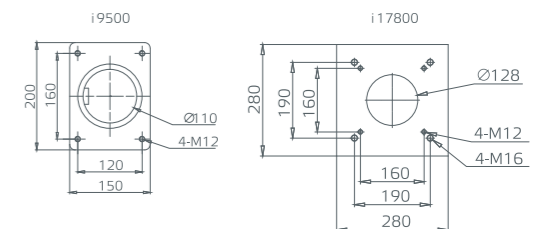
Robot fixed platen dimension



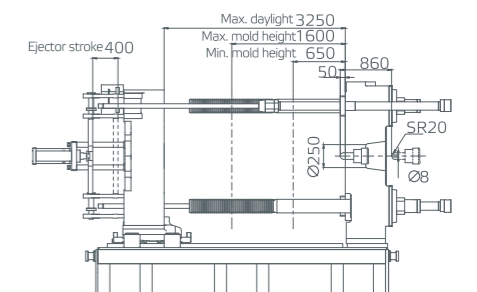
Moving platen dimension



Feeding port dimensions



Clamping unit



Injection unit	A	B
i9500	12000	5509
i17800	12455	5964

Unit:mm

NEO-H

Parameters

Clamping unit	Unit	NEO-H1900			
Clamping force	kN	19000			
Clamping stroke	mm	1750			
Space between tie bars	mm	1850×1500			
Max. mold height	mm	1700			
Min. mold height	mm	700			
Ejector stroke	mm	400			
Ejector force	kN	430			
No. of ejector pins	piece	13			
Max. daylight	mm	3450			
Min. mold dimension	mm	1295×1050			
Platen dimensions (HxV)	mm	2500×2110			
Injection unit	Unit	i17800			
		A	B	C	D
Screw diameter	mm	130	140	150	160
Screw L/D ratio	L/D	23.7	22.0	20.5	19.3
Shot size (theoretical)	cm ³	9145	10606	12176	13853
Injection weight (PS)	g	8322	9652	11080	12606
Injection pressure	MPa	213	184	160	141
Injection rate into air	g/s	1065	1235	1418	1613
Screw speed	rpm	98			
Max. injection speed	mm/s	88			
Injection stroke	mm	689			
Others	Unit	i17800			
Max. pump pressure	MPa	17.5			
Pump motor power	kW	61x2+61			
Heater power	kW	104.4			
Hopper capacity	kg	200			
Oil tank volume	L	1800			
Total machine weight	t	94			
Machine dimension (LxWxH)	m	13.0x4.3x3.4			

Remarks:

The bearing weight by moving platen is 2/3 of the maximum mold weight.

Theoretical capacity is the calculated volume of injection produced by the cross-sectional area of the screw/plunger and the injection stroke

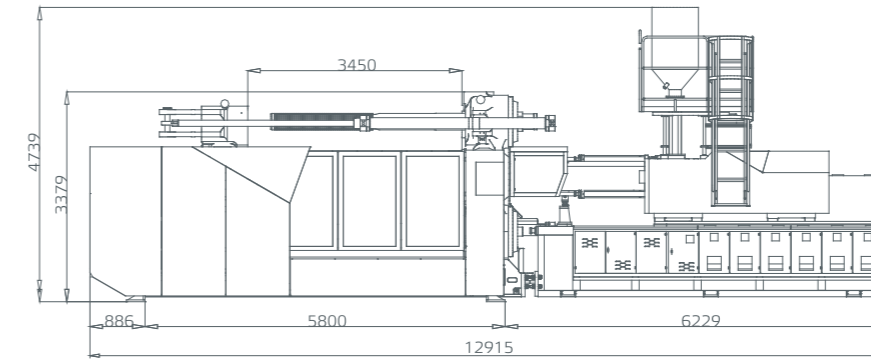
The injection weight (PS) is the theoretical value derived from the injection volume and the typical melt density of polystyrene

The screw speed is the theoretical maximum screw speed.

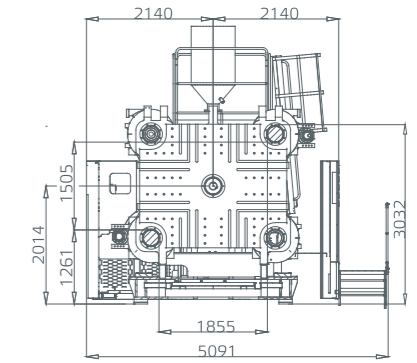
Please inform us if you have requirement for engineering material like PVC, PMMA or some special requirement.

Due to continuous improvements, we reserve the right to modify any aspect of the specification without prior notice.

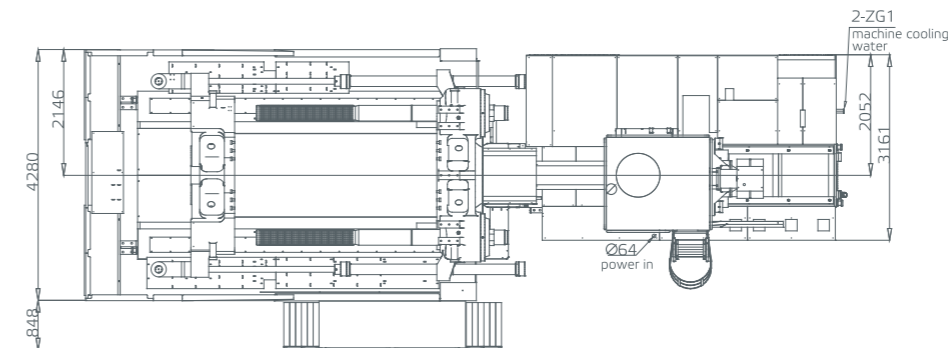
Front view of machine dimension



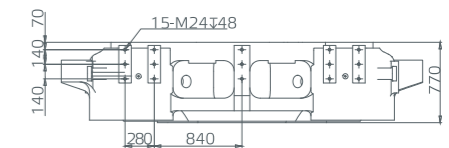
Robot installation dimension



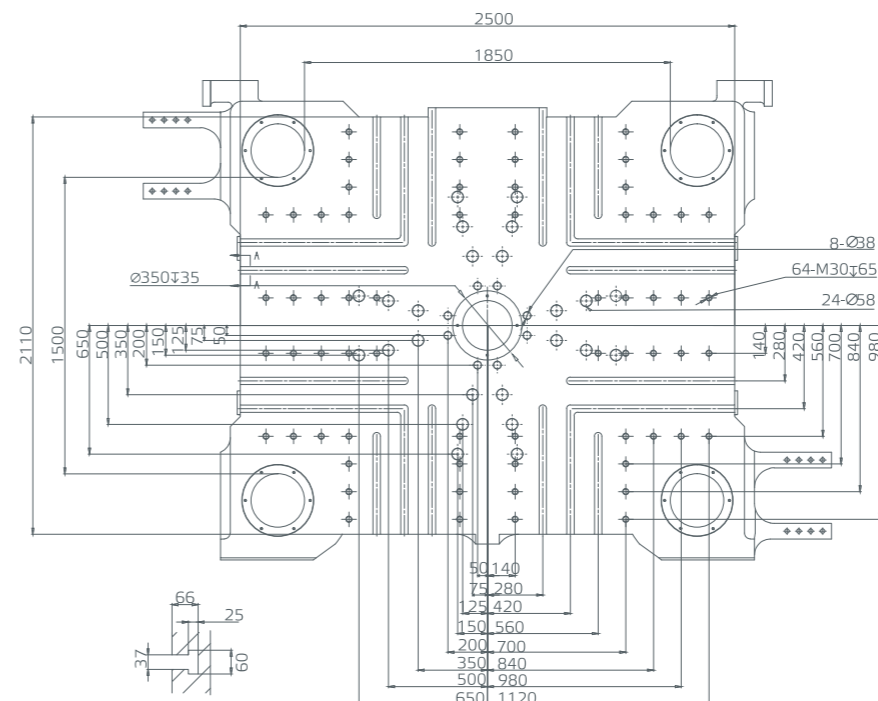
Top view of machine dimension



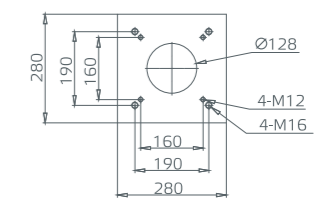
Robot fixed platen dimension



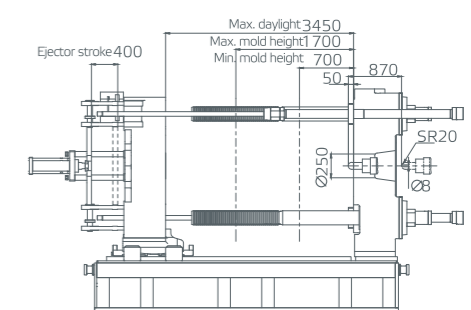
Moving platen dimension



Feeding port dimensions



Clamping unit



Unit:mm

NEO-H

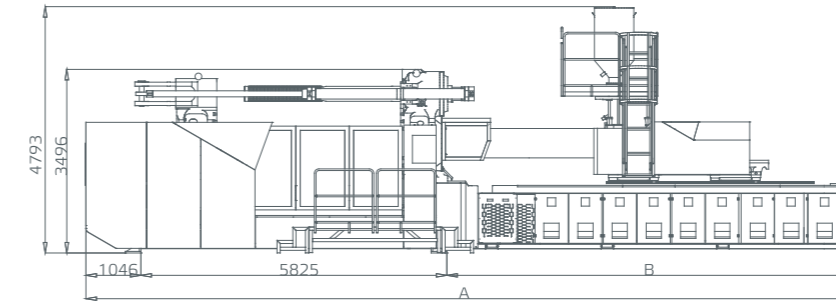
Parameters

Clamping unit	Unit	NEO-H2100												
Clamping force	kN	21000												
Clamping stroke	mm	1800												
Space between tie bars	mm	1820×1600												
Max. mold height	mm	1700												
Min. mold height	mm	700												
Ejector stroke	mm	400												
Ejector force	kN	430												
No. of ejector pins	piece	19												
Max. daylight	mm	3500												
Min. mold dimension	mm	1274×1120												
Platen dimensions (H×V)	mm	2540×2340												
Injection unit	Unit	i19700				i24000				i34700	i41000			
		A	B	C	D	A	B	C	D	A	A	B	C	D
Screw diameter	mm	140	150	160	170	150	160	170	180	175	170	180	190	200
Screw L/D ratio	L/D	23.6	22.0	20.6	19.4	23.5	22.0	20.7	19.6	22.0	23.3	22.0	20.8	19.8
Shot size (theoretical)	cm ³	10576	12140	13806	15586	13943	15864	17909	20078	24293	22698	25447	28353	31416
Injection weight (PS)	g	9624	11048	12563	14183	12688	14436	16297	18271	22107	20655	23157	25801	28588
Injection pressure	MPa	204	178	156	139	190	167	148	132	157	183	163	146	132
Injection rate into air	g/s	1284	1474	1677	1893	1383	1573	1776	1991	1668	1684	1888	2104	2331
Screw speed	rpm	99				99				79	79			
Max. injection speed	mm/s	92				86				76	82			
Injection stroke	mm	687				789				1010	1000			
Others	Unit	i19700				i24000				i34700	i41000			
Max. pump pressure	MPa	17.5				17.5				17.5	17.5			
Pump motor power	kW	51x3+61				51x3+61				51x4+16	61x3+61			
Heater power	kW	121.0				146.4				148	158.2			
Hopper capacity	kg	200				200				200	400			
Oil tank volume	L	1800				1800				2000	2000			
Total machine weight	t	113				114				116	123			
Machine dimension(L×W×H)	m	13.8x4.3x3.5				14.1x4.3x3.5				15.2x4.3x3.3	15.2x4.3x3.5			

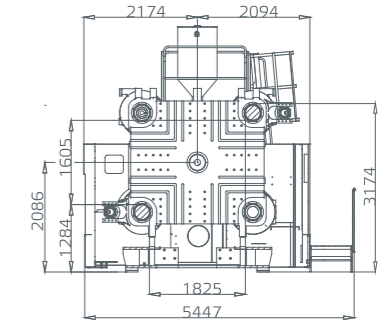
Remarks:
 The bearing weight by moving platen is 2/3 of the maximum mold weight.
 Theoretical capacity is the calculated volume of injection produced by the cross-sectional area of the screw/plunger and the injection stroke
 The injection weight (PS) is the theoretical value derived from the injection volume and the typical melt density of polystyrene
 The screw speed is the theoretical maximum screw speed.
 Please inform us if you have requirement for engineering material like PVC, PMMA or some special requirement.

Due to continuous improvements, we reserve the right to modify any aspect of the specification without prior notice

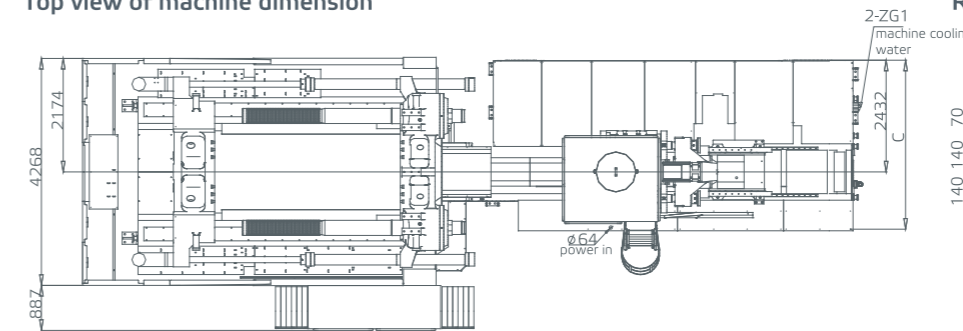
Front view of machine dimension



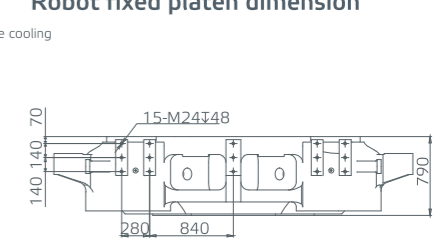
Robot installation dimension



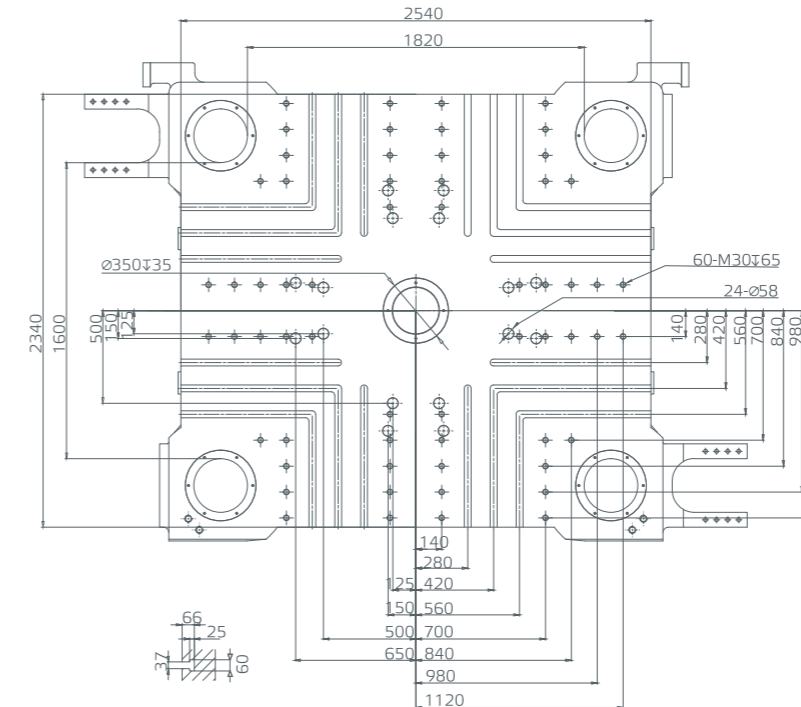
Top view of machine dimension



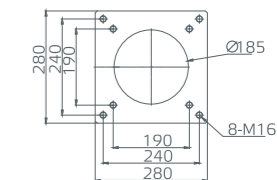
Robot fixed platen dimension



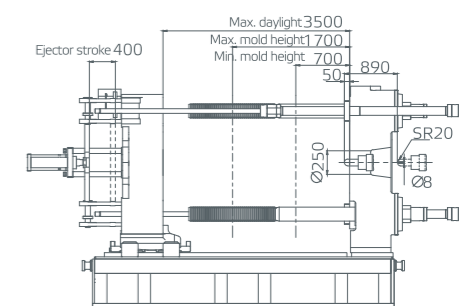
Moving platen dimension



Feeding port dimensions



Clamping unit



Injection unit	A	B	C
i19700	13716	6845	3212
i24000	14073	7202	3159
i34700	15136	8265	3740
i41000	15136	8265	3740

Unit: mm

NEO-H

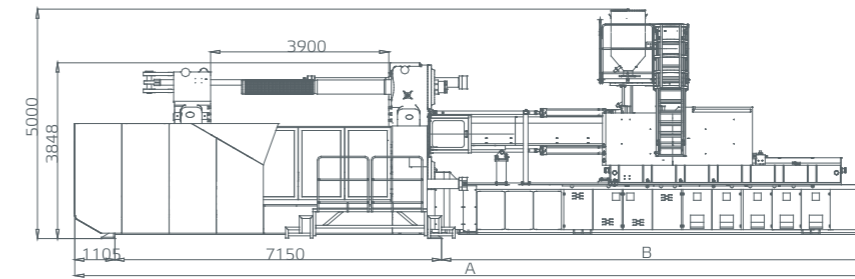
Parameters

Clamping unit	Unit	NEO-H2700											
Clamping force	kN	27000											
Clamping stroke	mm	2000											
Space between tie bars	mm	2000×1700											
Max. mold height	mm	1900											
Min. mold height	mm	800											
Ejector stroke	mm	500											
Ejector force	kN	560											
No. of ejector pins	piece	21											
Max. daylight	mm	3900											
Min. mold dimension	mm	1400×1190											
Platen dimensions(HxV)	mm	2700×2470											
Injection unit	Unit	i 19700				i 41000				i 54000			
		A	B	C	D	A	B	C	D	A	B	C	D
Screw diameter	mm	140	150	160	170	170	180	190	200	190	200	210	220
Screw L/D ratio	L/D	23.6	22.0	20.6	19.4	23.3	22.0	20.8	19.8	23.2	22.0	21.0	20.0
Shot size (theoretical)	cm ³	10576	12140	13813	15594	22689	25447	28353	31416	32577	36097	39797	43677
Injection weight (PS)	g	9624	11048	12570	14190	20655	23157	25801	28588	29645	32848	36215	39746
Injection pressure	MPa	204.3	178.0	156.4	138.5	183.0	163.0	146.0	132.0	183	165	150	136
Injection rate into air	g/s	1506	1729	1967	2220	1684	1888	2104	2331	2125	2354	2596	2849
Screw speed	rpm	99				79				62			
Max. injection speed	mm/s	108				82				82			
Injection stroke	mm	687				1000				1149			
Others	Unit	i 19700				i 41000				i 54000			
Max. pump pressure	MPa	17.5				17.5				20.16			
Pump motor power	kW	61x3+61				61x3+61				61x3+80			
Heater power	kW	121.0				158.2				196.0			
Hopper capacity	kg	200				400				400			
Oil tank volume	L	2000				2000				2600			
Total machine weight	t	138				148				160			
Machine dimension(LxWxH)	m	16.1X4.9X3.9				16.3X4.9X3.9				17.6x4.9x3.9			

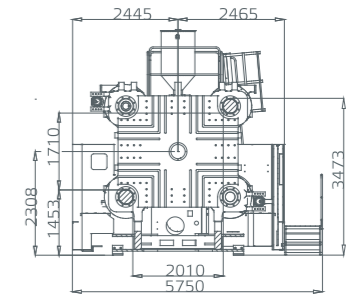
Remarks:
 The bearing weight by moving platen is 2/3 of the maximum mold weight.
 Theoretical capacity is the calculated volume of injection produced by the cross-sectional area of the screw/plunger and the injection stroke
 The injection weight (PS) is the theoretical value derived from the injection volume and the typical melt density of polystyrene
 The screw speed is the theoretical maximum screw speed.
 Please inform us if you have requirement for engineering material like PVC, PMMA or some special requirement.

Due to continuous improvements, we reserve the right to modify any aspect of the specification without prior notice

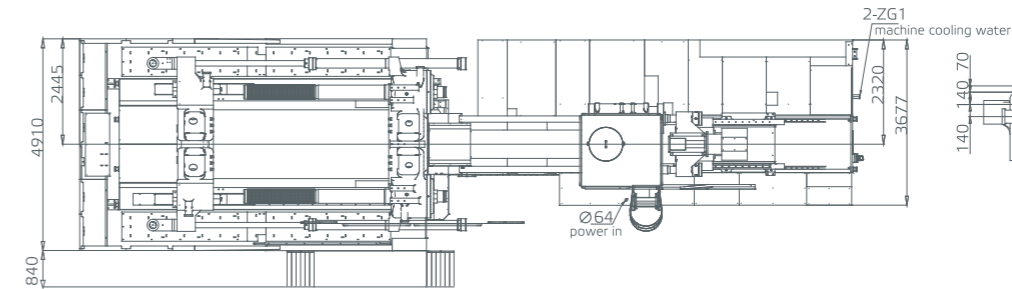
Front view of machine dimension



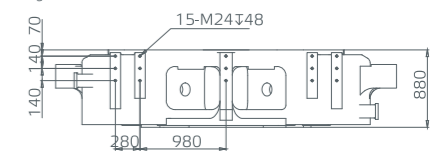
Robot installation dimension



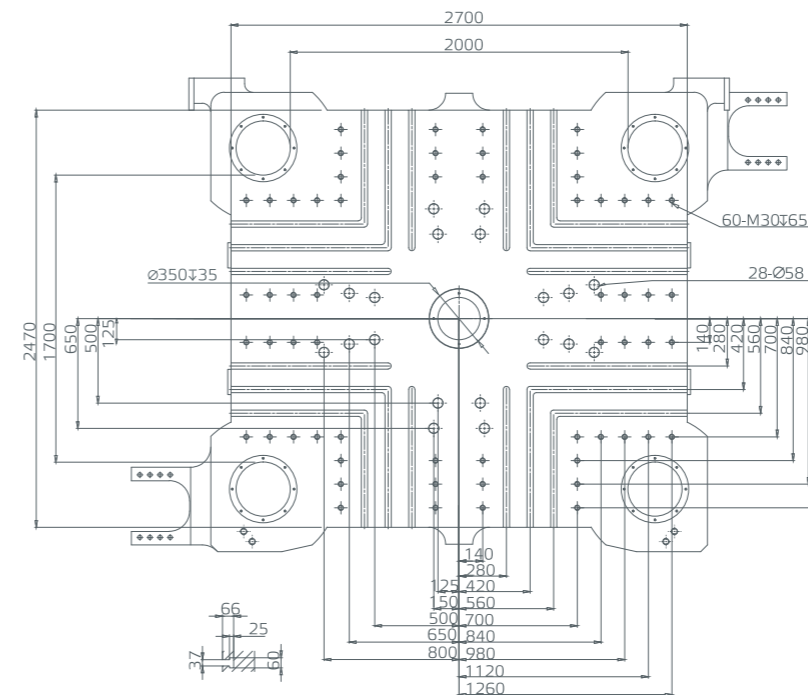
Top view of machine dimension



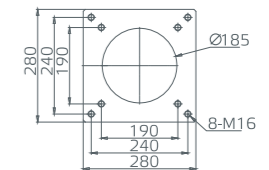
Robot fixed platen dimension



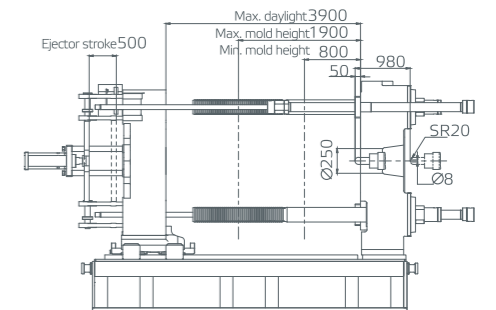
Moving platen dimension



Feeding port dimensions



Clamping unit



Injection unit	A	B
i19700	16100	7845
i41000	16245	7990
i54000	17614	9359

Unit:mm

NEO-H

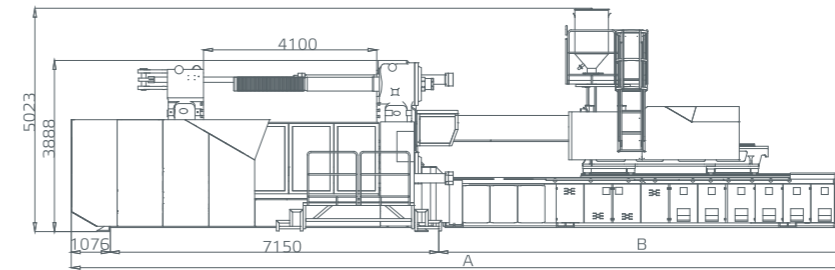
Parameters

Clamping unit	Unit	NEO-H3000							
Clamping force	kN	30000							
Clamping stroke	mm	2200							
Space between tie bars	mm	2020x1800							
Max. mold height	mm	1900							
Min. mold height	mm	800							
Ejector stroke	mm	500							
Ejector force	kN	560							
No. of ejector pins	piece	21							
Max. daylight	mm	4100							
Min. mold dimension	mm	1414x1260							
Platen dimensions (HxV)	mm	2800x2720							
Injection unit	Unit	i19700				i54000			
		A	B	C	D	A	B	C	D
Screw diameter	mm	140	150	160	170	190	200	210	220
Screw L/D ratio	L/D	23.6	22.0	20.6	19.4	23.2	22.0	21.0	20.0
Shot size (theoretical)	cm ³	10576	12140	13813	15594	32577	36097	39797	43677
Injection weight (PS)	g	9624	11048	12570	14190	29645	32848	36215	39746
Injection pressure	MPa	204.3	178.0	156.4	138.5	183.0	165.0	150.0	136.0
Injection rate into air	g/s	1506	1729	1967	2220	2125	2354	2596	2849
Screw speed	rpm	99				62			
Max. injection speed	mm/s	149				82			
Injection stroke	mm	687				1149			
Others	Unit	i19700				i54000			
Max. pump pressure	MPa	17.5				20.16			
Pump motor power	kW	61x3+51+80				61x3+51+80			
Heater power	kW	121				196			
Hopper capacity	kg	200				400			
Oil tank volume	L	2600				2600			
Total machine weight	t	150				160			
Machine dimension (LxWxH)	m	16.4x4.9x3.9				17.5x4.9x3.9			

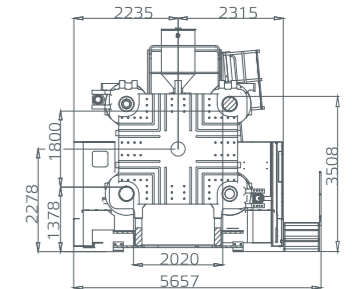
Remarks:
 The bearing weight by moving platen is 2/3 of the maximum mold weight.
 Theoretical capacity is the calculated volume of injection produced by the cross-sectional area of the screw/plunger and the injection stroke
 The injection weight (PS) is the theoretical value derived from the injection volume and the typical melt density of polystyrene
 The screw speed is the theoretical maximum screw speed.
 Please inform us if you have requirement for engineering material like PVC, PMMA or some special requirement.

Due to continuous improvements, we reserve the right to modify any aspect of the specification without prior notice

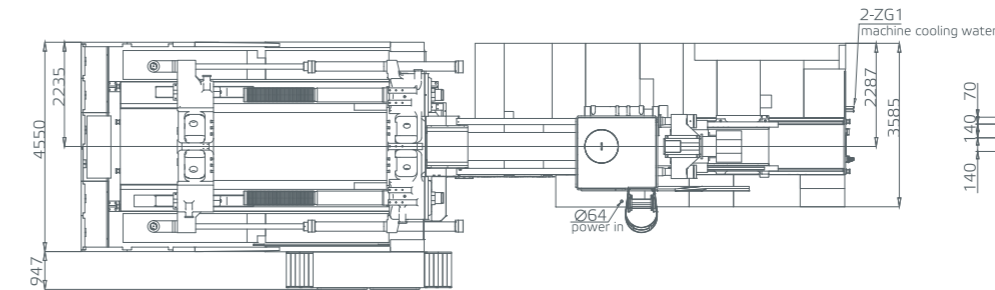
Front view of machine dimension



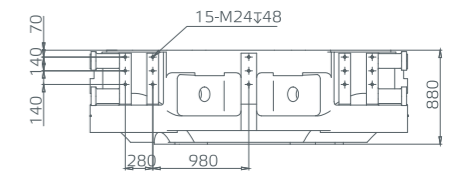
Robot installation dimension



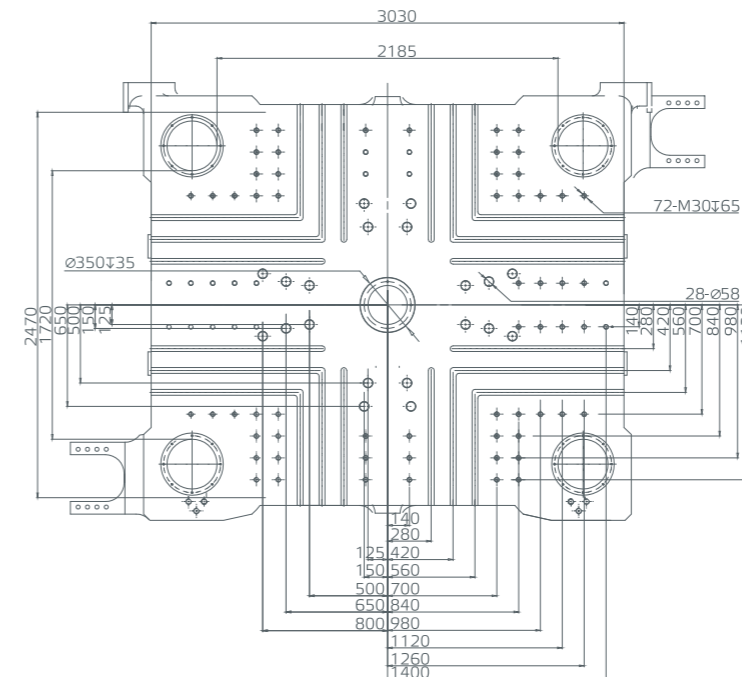
Top view of machine dimension



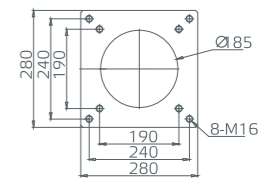
Robot fixed platen dimension



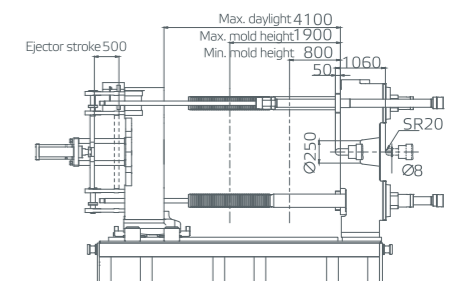
Moving platen dimension



Feeding port dimensions



Clamping unit



Injection unit	A	B
i19700	16400	8174
i54000	17447	9221

Unit:mm

NEO-H

Parameters

Clamping unit	Unit	NEO-H3500							
Clamping force	kN	35000							
Clamping stroke	mm	2300							
Space between tie bars	mm	2200×1900							
Max. mold height	mm	2000							
Min. mold height	mm	900							
Ejector stroke	mm	560							
Ejector force	kN	560							
No. of ejector pins	piece	21							
Max. daylight	mm	4300							
Min. mold dimension	mm	1540x1330							
Platen dimensions (HxV)	mm	3100x2840							
Injection unit	Unit	i22500				i66600			
		A	B	C	D	A	B	C	D
Screw diameter	mm	140	150	160	170	200	210	220	230
Screw L/D ratio	L/D	23.6	22.0	20.6	19.4	23.1	22.0	21.0	20.1
Shot size (theoretical)	cm ³	10576	12140	13813	15594	39553	43607	47859	52308
Injection weight (PS)	g	9624	11048	12570	14190	35993	39682	43551	47601
Injection pressure	MPa	216.0	188.1	165.3	146.5	187.2	169.8	154.7	141.5
Injection rate into air	g/s	1506	1729	1967	2220	2075	2287	2510	2744
Screw speed	rpm	99				62			
Max. injection speed	mm/s	108				73			
Injection stroke	mm	687				1259			
Others	Unit	i22500				i66600			
Max. pump pressure	MPa	18.5				17.5			
Pump motor power	kW	61x3+51+80				61x3+51+80			
Heater power	kW	121				232.1			
Hopper capacity	kg	200				400			
Oil tank volume	L	2600				2600			
Total machine weight	t	175				208			
Machine dimension (LxWxH)	m	17.7x5.2x4.2				19x5.2x4.2			

Remarks:

The bearing weight by moving platen is 2/3 of the maximum mold weight.

Theoretical capacity is the calculated volume of injection produced by the cross-sectional area of the screw/plunger and the injection stroke

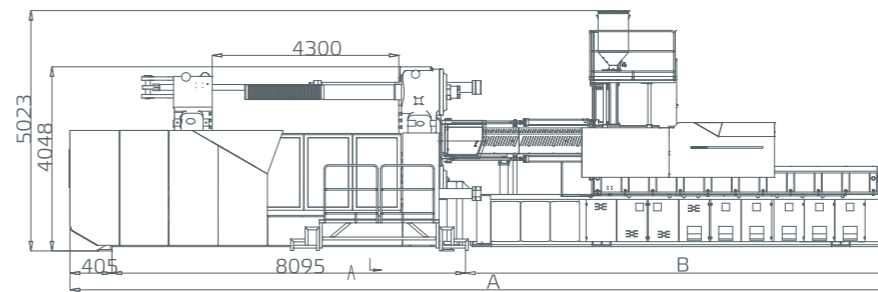
The injection weight (PS) is the theoretical value derived from the injection volume and the typical melt density of polystyrene

The screw speed is the theoretical maximum screw speed.

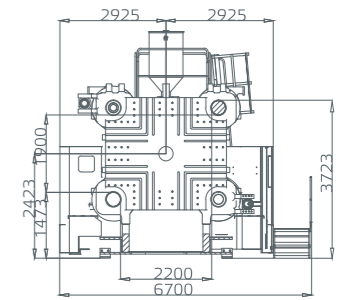
Please inform us if you have requirement for engineering material like PVC, PMMA or some special requirement.

Due to continuous improvements, we reserve the right to modify any aspect of the specification without prior notice

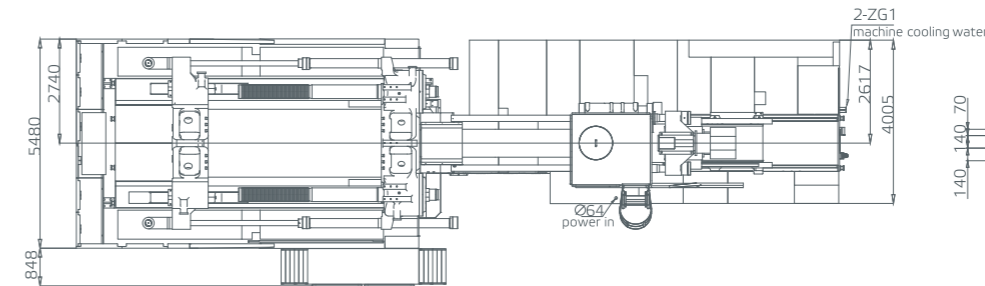
Front view of machine dimension



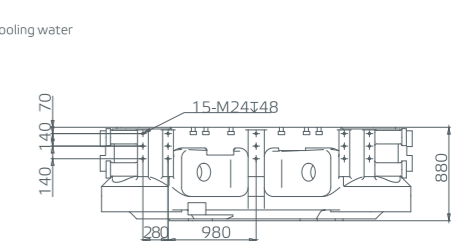
Robot installation dimension



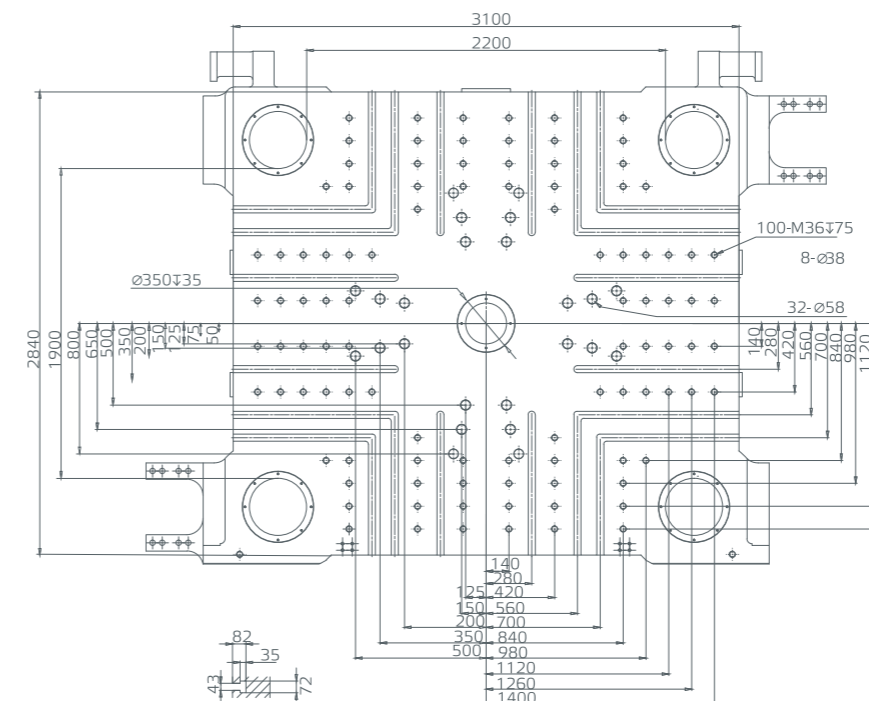
Top view of machine dimension



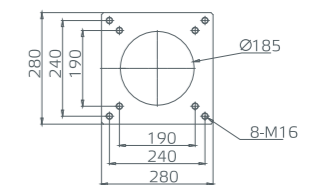
Robot fixed platen dimension



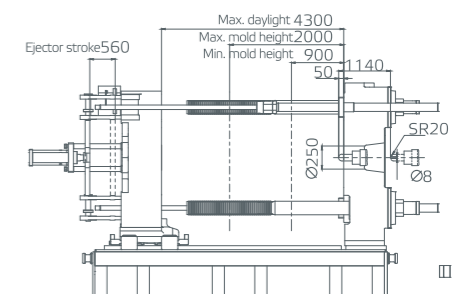
Moving platen dimension



Feeding port dimensions



Clamping unit



Injection unit	A	B
i22500	17700	9200
i66600	18950	10450

Unit:mm

NEO-H

Parameters

Clamping unit	Unit	NEO-H4500			
Clamping force	kN	45000			
Clamping stroke	mm	2500			
Space between tie bars	mm	2420×2020			
Max. mold height	mm	2100			
Min. mold height	mm	1000			
Ejector stroke	mm	560			
Ejector force	kN	560			
No. of ejector pins	piece	21			
Max. daylight	mm	4600			
Min. mold dimension	mm	1694x1414			
Platen dimensions (HxV)	mm	3350x2990			
Injection unit	Unit	i91600			
		A	B	C	D
Screw diameter	mm	230	240	250	260
Screw L/D ratio	L/D	23.0	22.0	21.1	20.3
Shot size (theoretical)	cm ³	53139.3	57860.5	62782.7	67905.8
Injection weight (PS)	g	48356.8	52653.1	57132.3	61794.3
Injection pressure	MPa	188.5	173.1	159.5	147.5
Injection rate into air	g/s	2756	3000	3256	3521
Screw speed	rpm	50			
Max. injection speed	mm/s	73			
Injection stroke	mm	1279			
Others	Unit	i91600			
Max. pump pressure	MPa	17.5			
Pump motor power	kW	61x3+51x3+80			
Heater power	kW	374.8			
Hopper capacity	kg	400			
Oil tank volume	L	3600			
Total machine weight	t	250			
Machine dimension (LxWxH)	m	20.7x5.5x4.3			

Remarks:

The bearing weight by moving platen is 2/3 of the maximum mold weight.

Theoretical capacity is the calculated volume of injection produced by the cross-sectional area of the screw/plunger and the injection stroke

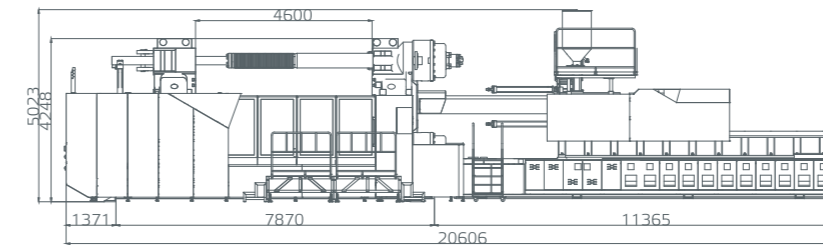
The injection weight (PS) is the theoretical value derived from the injection volume and the typical melt density of polystyrene

The screw speed is the theoretical maximum screw speed.

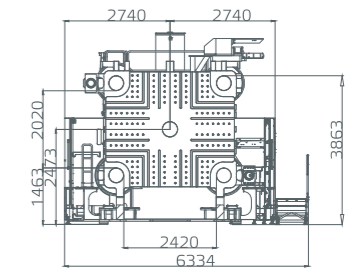
Please inform us if you have requirement for engineering material like PVC, PMMA or some special requirement.

Due to continuous improvements, we reserve the right to modify any aspect of the specification without prior notice

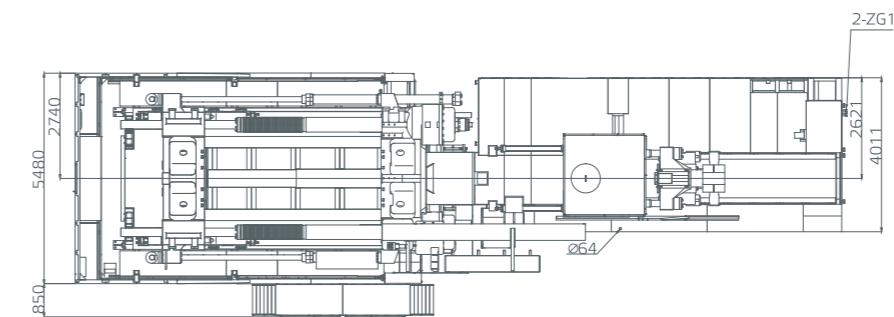
Front view of machine dimension



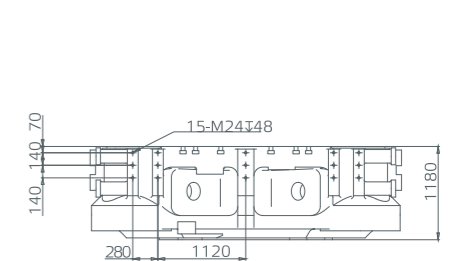
Robot installation dimension



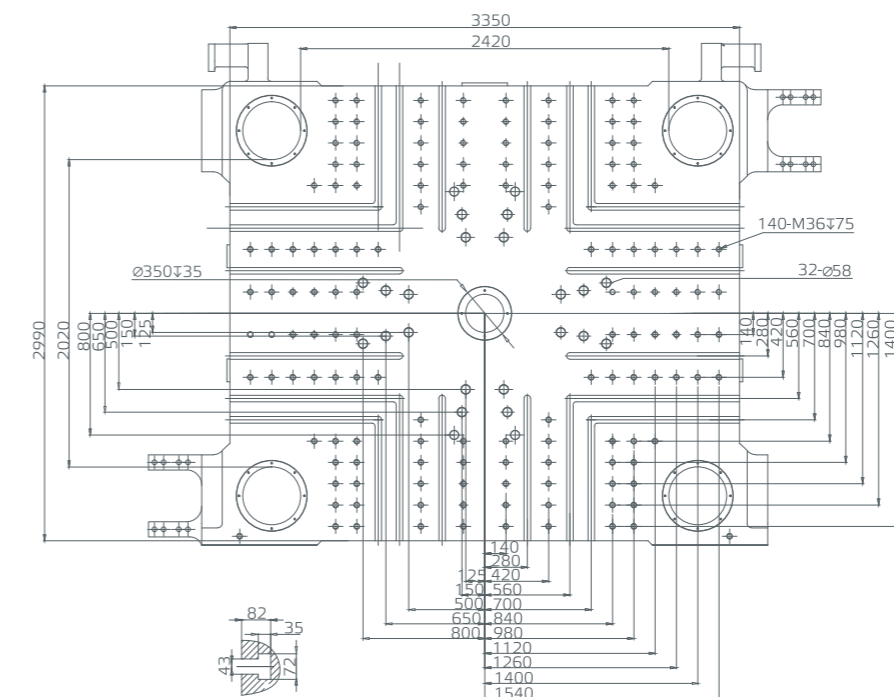
Top view of machine dimension



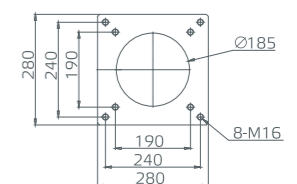
Robot fixed platen dimension



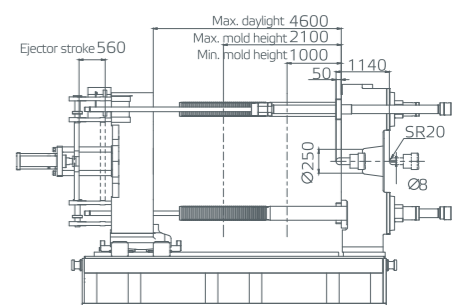
Moving platen dimension



Feeding port dimensions



Clamping unit



Unit:mm

NEO-H

Components & functions list

For clamping

Function description /Clamping unit	NEO-H550-NEO-H850	NEO-H1200-NEO-H4500
Platen with tapped holes	○	○
Platen with T slots	●	●
Platen (according to EUROMAP 2)	○	○
High rigid two-platen clamping unit	●	●
Mechanical safety	○	○
Electrical safety	●	●
Hydraulic safety	●	●
Auto-mold height adjustment function	●	●
Mold open, closing and mold adjusting are controlled by transducer	●	●
Fix-quantity type auto central lubrication system	●	●
Mechanical adjust support for moving platen	●	●
High rigidity steel wear strips for moving platen	●	●
Auto safety door	○	●
EUROMAP 18 robot interface	●	●
Magnetic platen	○	○
Hydraulic/electrical unscrew device	○	○
Widened door and covers	○	○
Safety pressure plate under mold area	○	●
Two water regulation manifolds	●	●
Quick coupling for water regulator	●	●
Two air blow circuits	●	●
Four air blow circuits	○	○
Glass water flow regulators	○	○
Self-lock valve for locking	●	●
Buffer lock brake control	●	●

● Standard ○ Optional

For injection

Function description/ Injection unit	i3800-i5800	i7500-i9500	i13500-i17800	i19700-i24000	i41000-i91600
Standard screw	●	●	●	●	●
Other screw	○	○	○	○	○
Shut off nozzle	○	○	○	○	○
Double cylinder injection	●	●	●	●	●
Double carriage cylinders	●	●	●	●	●
Transducer control for carriage cylinder	●	●	●	●	●
Screw rotating speed display	●	●	●	●	●
Plasticizing with hydraulic motor	●	●	●	○	○
Proportional back pressure control	●	●	●	●	●
Closed-loop control of the temperature at the discharge port	●	●	●	●	●
Barrel Insulation cover	●	●	●	●	●
Nozzle cover	●	●	●	●	●
Self-lock valve for carriage forward	●	●	●	●	●
Material loading platform	○	○	●	●	●
Carriage central lubrication device	●	●	●	●	●
Carriage central auto lubrication device	○	○	○	○	○
Stainless heater bands	●	○	○	○	○
Ceramic heater band	○	●	●	●	●
Electrical plasticizing	○	○	○	●	●
Screw mobile feed hopper	○	○	○	○	○
Gas-assisted injection interface	○	○	○	○	○
Foam moulding	○	○	○	○	○
Hopper dryer	○	○	○	○	○
Stainless hopper	●	●	●	●	●
Barrel Insulation device	○	○	○	○	○

● Standard ○ Optional

NEO-H

Components & functions list

For electric

Function description /Clamping unit	NEO-H550-NEO-H850	NEO-H1200-NEO-H4500
Keba controller	●	●
KEBA 15-inch touch screen	●	●
Memory with 200 sets of mold parameters	●	●
All action instant monitoring	●	●
Production monitoring	●	●
Failure alarm display	●	●
Changeover from injection fill to hold by injection pressure	○	○
I/O monitoring display	●	●
3 color light (with buzzer)	●	●
Motor overload protection	●	●
Front/back door emergency stop switch	●	●
5 pins socket of 380V/32A, 2 groups 5 pins socket of 380V/16A, 1 group 3 pins socket of 230V/16A, 1 group	●	●
Transformer for servomotor system	○	○
EUROMAP 13 neutron connection	●	●
EUROMAP 12 robot interface	●	●
EUROMAP 67 robot interface	○	○
Double protection for heating	●	●
Safety relay monitoring	●	●
SSR heating control	●	●
Hot runner control system & interface	○	○
Instant power consumption monitoring	○	○
Instant clamping force monitoring	●	●
230V/10A Industrial plug	●	●
Electrical cabinet lighting device	●	●
Remote control	○	○
Close-loop control for mold open/close	●	●
Safety pedal monitoring	○	●
Open-phase protection	●	●
Inspection of repair door	●	●

● Standard ○ Optional

For hydraulic

Function description / Injection unit	i3800-i24000	i41000-i91600
Fast response servo system	●	●
Increased motor-pump unit	○	○
Independent cooling system	●	●
Independent filtration system	●	●
Pressure control for Injection to hold on pressure	○	○
Programmable injection sequence	○	○
Fast injection with accumulator	○	○
Carrier self-lock valve	●	●
Proportional injection valve	○	○
Injection servo valve	○	○
Oil temp. detector	●	●
Oil level alarm	●	●
Anti-explosive chain	●	●
Self-lock suction oil filter	●	●
Control of oil temperature and cold water valve	●	●
Function description /Clamping unit	NEO-H550-NEO-H1200	NEO-H1400-NEO-H4500
Two core pull circuits on moving platen	●	●
Two core pull circuit on moving platen, two core pull circuit on fixed	○	●
Sequence valve	○	○
Fast molding closing device	●	●
Quick clamping device	●	●
Ejector on-the-fly	●	●
Low pressure mold protection	●	●
Hydraulic safety device	●	●
Plasticize on-the-fly	○	○
Plasticizing & ejector on the fly	○	○
Proportional valve control for clamp open and close	●	●
Servo valve control for clamp open and close	○	○

● Standard ○ Optional

NEO·H

Components & functions list

For other

Function description / Other	NEO-H550-NEO-H1900	NEO-H2100-NEO-H4500
Tederic standard color	●	●
Shock-proof pad	●	●
Foundation steel plate, Foundation anchor bolts	○	○
Spare parts box, tools, mould clamps, easy broken parts, extended nozzle, operation manual	●	●
High base	○	○
Robot	○	○
Magnet (for hopper dryer)	○	○
Chiller	○	○
Mould temp controller	○	○
Dehumidifier	○	○
Autoloader	○	○
Fumigated wooden packaging	○	○
With full-tank hydraulic oil	○	○
Products fetching platform		●

● Standard ○ Optional